



Superdome capacity = 71,000 seats  
 Diameter of Dome = 640 feet  
 Area of Roof = 5.7 acres  
 Elevation about 3 feet above sea level  
 Total Square Footage = 200,000 sq ft  
 Main Arena = 100,000 sq ft  
 Convention Concourse = 70,000 sq ft

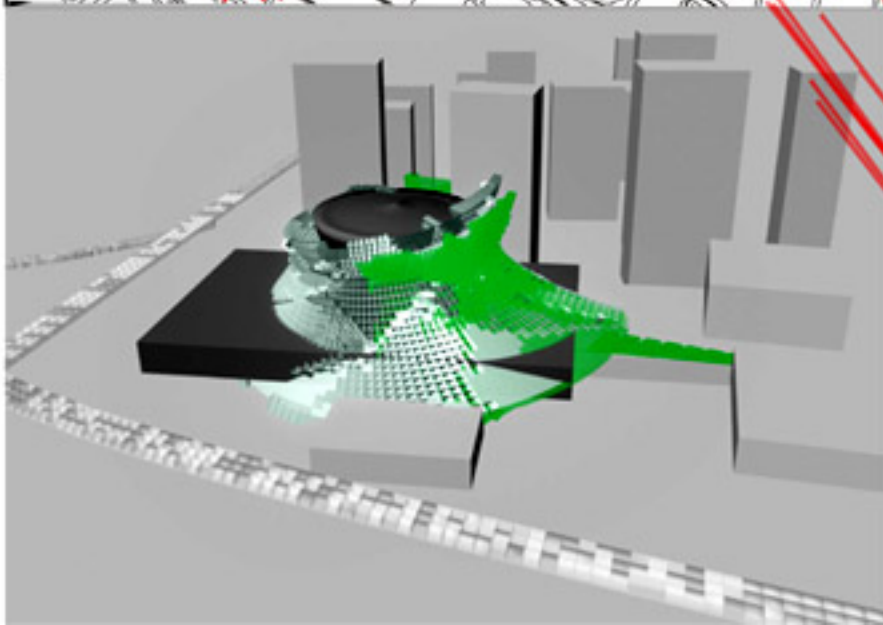
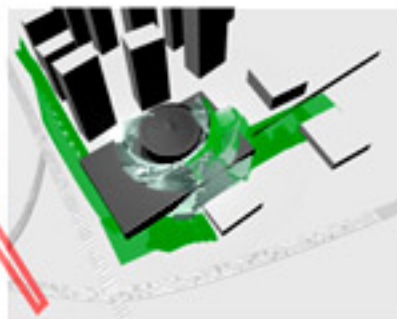
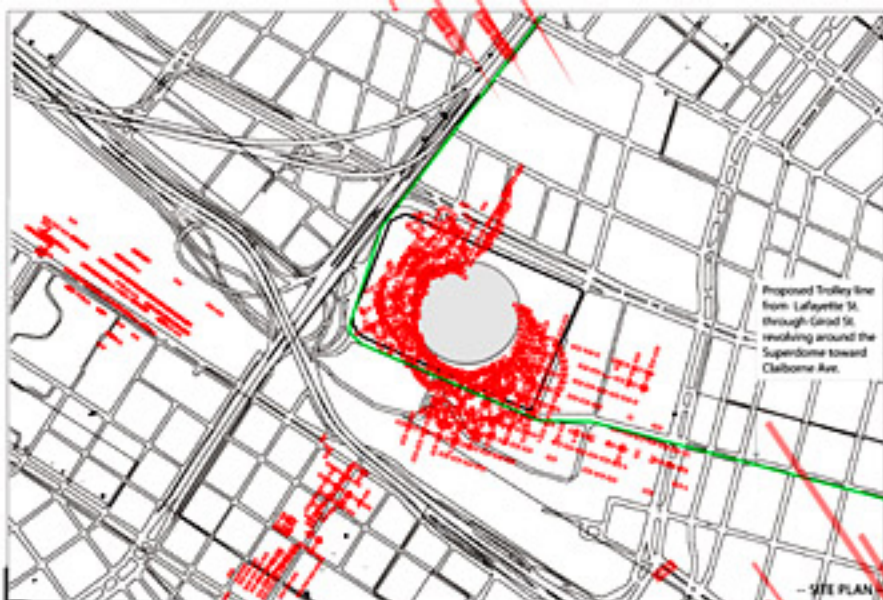


Superdome Volume = 26,000 50 Units

Basic Unit Of Volume = Volume of typical Shotgun House



-- Conceptual diagrams --



The Superdome is thus enriched with terraces that allow for ventilation, vegetation and agriculture in the vertical areas and for a shaded urban park in the horizontal areas. Aiming to seam together the large infrastructure that has taken precedence in the community in the past. This is a proposal to :

Re-  
 Re-  
 Re-  
 Re-  
 Re-  
 Re-

Surface  
 Build  
 Cycle  
 Claim  
 Think  
 Evolve

